

Who are in and who are not?

Characteristics of patients with inflammatory rheumatic diseases accepting an online system for remote entry of patient reported outcomes

Experiences from the Danish DANBIO registry

Bente Glintborg, MD, PhD, DrMedSci
Chair of the DANBIO steering committee



Background

- Patient reported outcomes (PROs) are widely used to monitor inflammatory rheumatic diseases (IRD) – rheumatoid arthritis, psoriatic arthritis, axial spondyloarthritis
- Digital solutions for online monitoring of chronic diseases are increasingly implemented in health care
- We lack knowledge regarding large scale implementation of online systems for monitoring of PROs in IRD routine care



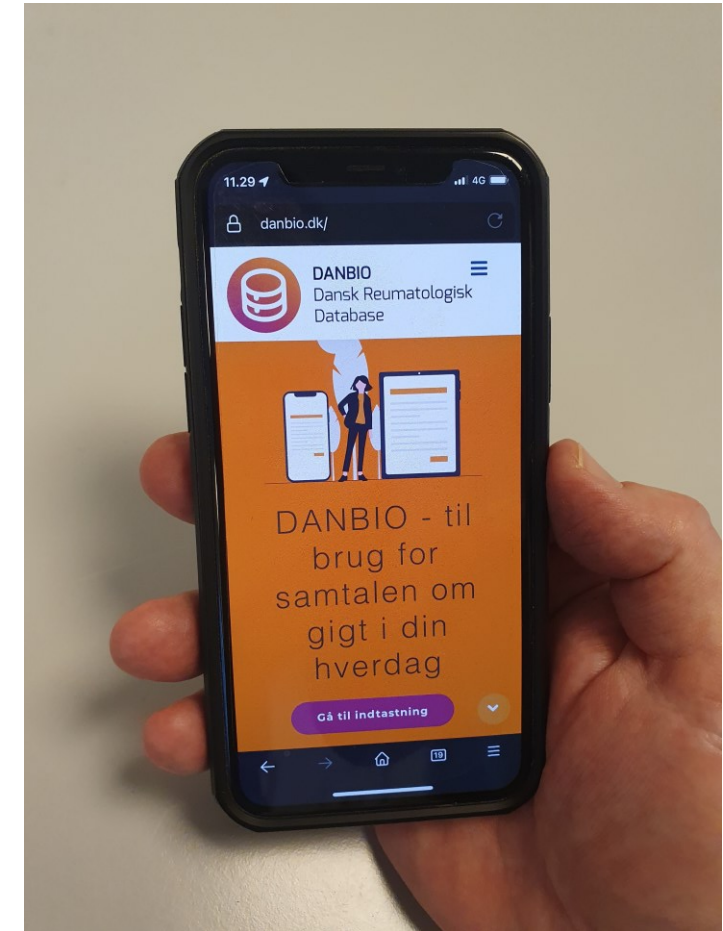


April 2020



DANBIO from home

- Allows PROs to be entered remotely by computer, tablet, or smartphone after secure log-on.
- Patients in DANBIO were informed through e-Boks (>30.000 patients)
- Accessed before planned consultations, or when participating in the voluntary questionnaire survey 'You and your rheumatic disease during times with coronavirus' (May 2020, Nov 2020, June 2021)



www.patient.danbio.dk

Velkommen til DANBIO hjemmefra

Her kan du forberede dig på din samtale med lægen.
Du kan i ro og mag besvare spørgsmål om din gigtsygdom.
Spørgsmålene svarer til dem, som du plejer at besvare.

 [LOGIN MED NEMID](#)

Bemærk: Dine indtastninger ses ikke af din kontaktlæge indtil kort før jeres næste samtale. Hvis du føler dig syg, bedes du kontakte din gigtklinik direkte som normalt.

Dig og din gigtsygdom i en tid med corona

For tiden beder vi mange, som følges med gigtsygdom ved en gigtklinik, om at deltage i en frivillig spørgeskemaundersøgelse.

Login med NemID. Spørgeskemaet kommer direkte efter de spørgsmål du plejer at besvare.

Vi håber, du har lyst til at deltage.

 [OM DANBIO OG SPØRGESKEMAER](#)

 [OM DATABEHANDLING](#)

Bruger du Internet Explorer? Få en bedre oplevelse ved at skifte til Chrome, Safari, Edge eller FireFox.

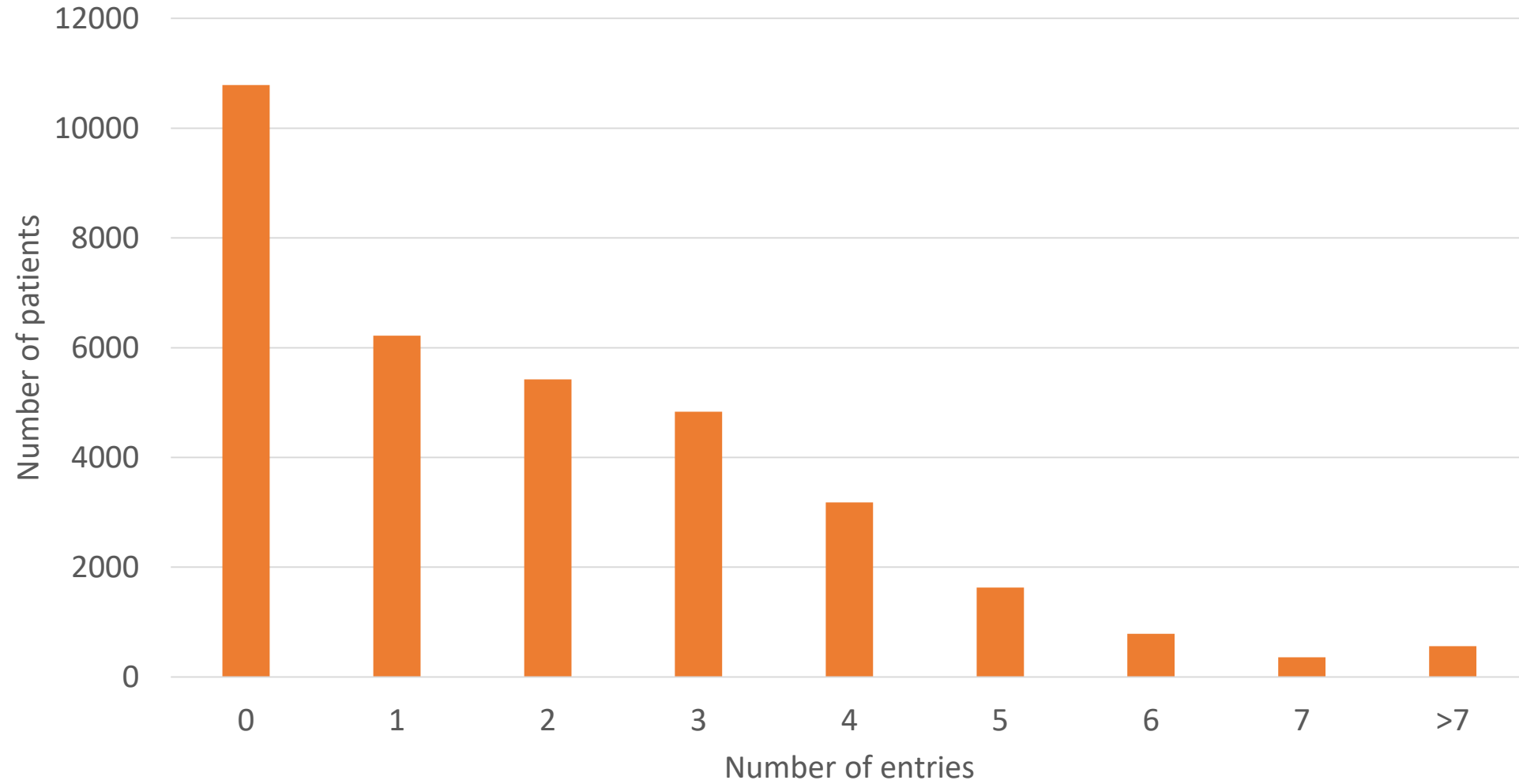
Aims

To explore the use of DANBIO-from-home for entry of PROs during the first 1.5 years after launching, with focus on

- a) the characteristics of patients who did versus patients who did not use the system
- b) the impact of patient characteristics on time to first entry of PROs

Characteristics according to DANBIO data-entry December 2021			
		Data entry, DANBIO-from-home N=33,776	
		YES 22,990 (68%)	NO 10,786 (32%)
Gender, female		14614 (64%)	3914 (36%)
Age, strata, years	< 40	2231 (10%)	1386 (13%)
	40-60	8288 (36%)	3104 (29%)
	61-80	11327 (49%)	4479 (42%)
	>80	1144 (5%)	1817 (17%)
Age, years, median (IQR)		62 (52-71)	65 (50-77)

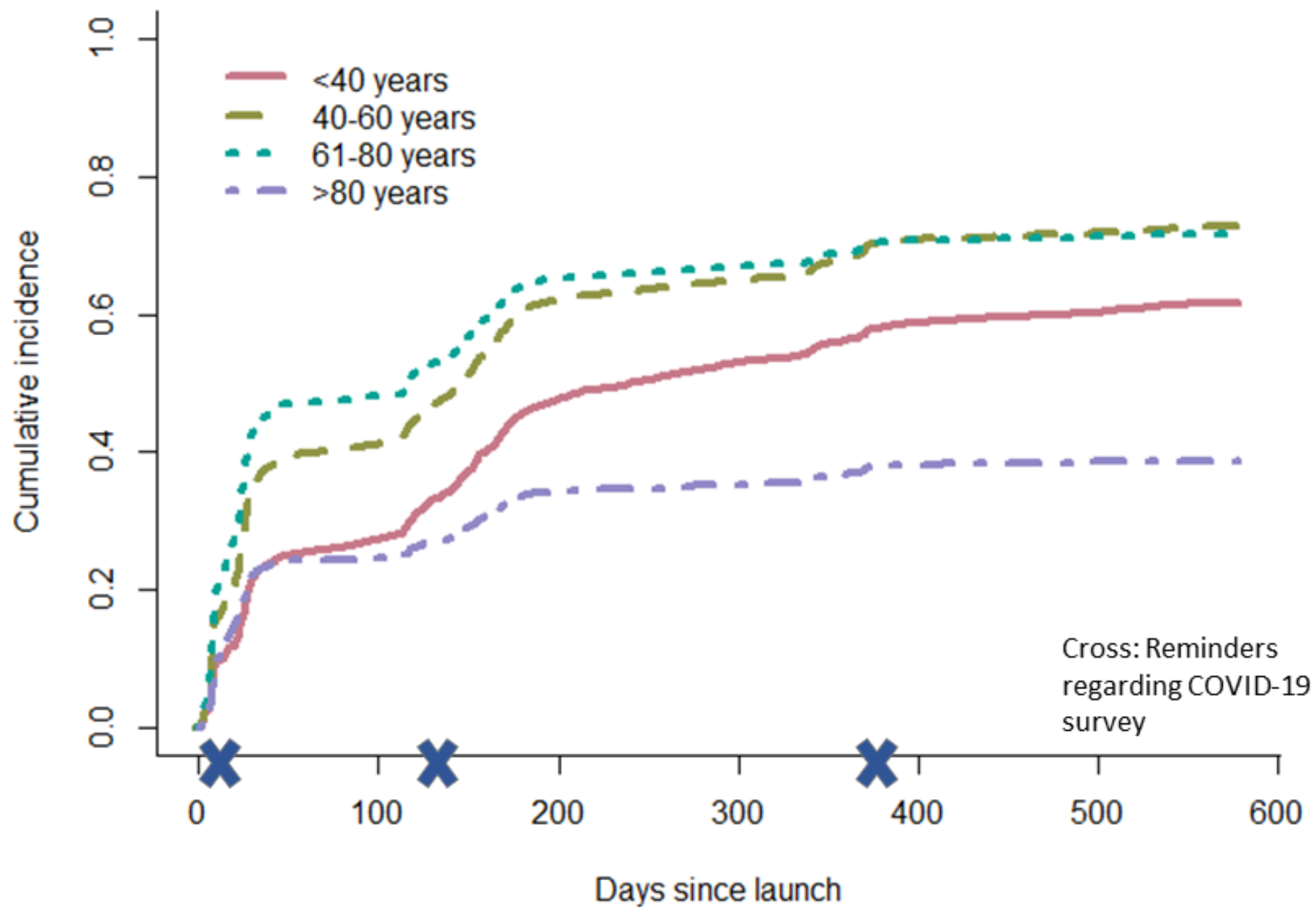
Number of DANBIO-from-home entries during study period



**Clinical factors associated with use (yes versus no) of DANBIO-from-home.
Results of multivariable logistic regression analyses with odds ratios (ORs)**

Covariate		OR (95% CI)	p
Gender	Male	1 (ref)	<0.001
	Female	1.19 (1.12-1.27)	
Age, years	<40	1 (ref)	
	40-60	1.79 (1.63-1.97)	<0.001
	61-80	1.87 (1.70-2.07)	<0.001
	>80	0.57 (0.50-0.65)	<0.001
Diagnosis	Rheumatoid arthritis	1.08 (0.99-1.17)	0.07
	Psoriatic arthritis	1.09 (0.99-1.20)	0.07
	Axial spondyloarthritis	1 (ref)	
Biologic treatment	Yes	1.41 (1.33-1.50)	<0.001
	No	1 (ref)	
Disease duration, years		1.0 (0.99-1.00)	0.09
HAQ per unit		0.68 (0.65-0.71)	<0.001
PASS	Yes	1 (ref)	0.009
	No	1.09 (1.02-1.17)	

Time to first DANBIO-from-home entry, by age group

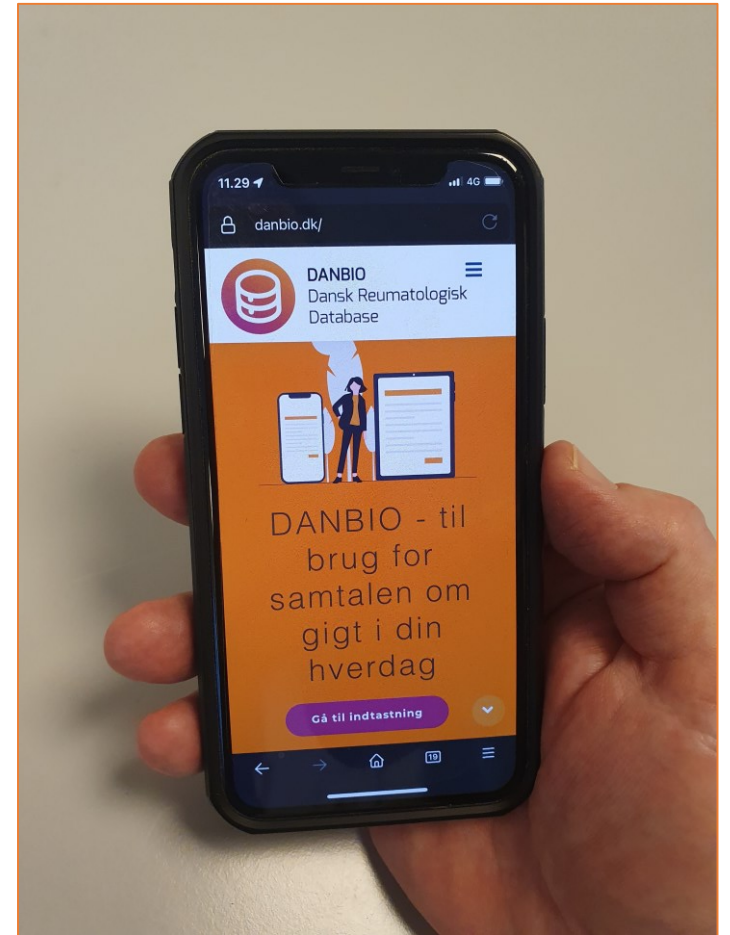


Conclusion

- After 1.5 years nearly **70%** of 33,776 patients had used the system
- Use was **high in all patient groups**, and median time to first entry was 27 days
- **Women** and patients treated with a **bDMARD** used the system most, and use was lowest in the younger and elderly
- From-home systems for capturing PROs can be **successfully implemented** in routine care to support monitoring of patients

Update, August 2022

- Users of DANBIO: 47,018
- Have used DANBIO from home at least once: 36,239 (**78%**)



Nationwide, large-scale implementation of an online system for remote entry of patient-reported outcomes in rheumatology: characteristics of users and non-users and time to first entry

Bente Glintborg ^{1,2} Dorte Vendelbo Jensen,^{3,4} Lene Terslev ^{2,3}
Oliver Hendricks,^{5,6} Mikkel Østergaard,^{2,3} Simon Horskjær Rasmussen,⁷
Mogens Pfeiffer Jensen,^{2,3} Thomas Adelsten,⁸ Ada Colic,⁸ Kamilla Danebod,⁷
Malene Kildemand,⁹ Anne Gitte Loft,^{10,11} Heidi Lausten Munk ¹²
Jens Kristian Pedersen,^{13,14} René Drage Østgård,¹⁵ Christian Møller Sørensen,¹⁶
Niels Steen Krogh,¹⁷ Jette Agerbo,¹⁸ Connie Ziegler,¹⁸ Merete Lund Hetland ^{2,3}

Co-authors

Dorte Vendelbo Jensen, Gentofte and Herlev University Hospital

Merete Hetland, Lene Terslev, Mikkel Østergaard, Mogens Pfeiffer Jensen, Simon Horskjær Rasmussen,

Kamilla Danebod, DANBIO, Rigshospitalet, Glostrup University Hospital

Thomas Adelsten, Ada Colic, Køge University Hospital

Malene Kildemand, Odense University Hospital

Anne Gitte Loft, Aarhus University Hospital

Heidi Lausten Munk, Odense University Hospital

Jens Kristian Pedersen, Odense University Hospital, Svendborg Hospital

René Drage Østgård, Silkeborg Regional Hospital

Christian Møller Sørensen, Horsens Regional Hospital

Niels Steen Krogh, Zitelab, Copenhagen

Jette Nørgaard Agerbo, Connie Ziegler, patient representatives, Danish Rheumatism Association

The study was partly sponsored by Lundbeck

